

LANDIMORE PARK

Hardingstone, Northamptonshire NN4 6EF

2 bedroom homes with private gardens and parking

AVAILABLE TO RESERVE OFF PLAN



LANDIMORE PARK

Hardingstone, Northamptonshire NN4 6EF

Stonewater, in partnership with Tilia Homes, is proud to present this small collection of **2 bedroom homes for shared ownership** at the popular Landimore Park development in Hardingstone, near Northampton.

Each features on the ground floor a living room and a separate kitchen/dining room with French doors which open on to the rear garden. There's also a useful downstairs cloakroom with WC and hand basin. Upstairs are two double bedrooms and a contemporary style family bathroom. Each of the properties comes with two allocated parking spaces and fully turfed rear gardens.

Hardingstone, a charming village on the southern edge of Northampton, is three miles from the town centre. The village boasts a pretty conservation area, a local shop for every day groceries, an attractive church, two pubs and a post office. For bigger shops a Waitrose and a Tesco Extra are a short drive from the development.

Northampton has plenty to offer with shopping, museums, sports facilities and a renowned theatre. The town's market square is one of the oldest and largest in Britain, dating back to 1235. Most days there is an open-air market in the square whilst the nearby pedestrianised Abington Street and The Grosvenor Centre offer an array of independent retailers and major high street names. Alternatively, you could always head to one of the out-of-town retail parks such as Weston Favell Shopping Centre, St James Retail Park and Riverside Retail Park.

For those who like to be outdoors, the village has beautiful open countryside on its doorstep. Barnes Meadow Nature Reserve has grassland and wetland bird habitats and Sywell Country Park, built around a former reservoir, has a playground and a native butterfly garden.

Hardingstone has a fantastic selection of local schools catering for primary, secondary and sixth form students. Preston Hedges Primary School, a few minutes' drive from the development, is rated as Outstanding by Ofsted.

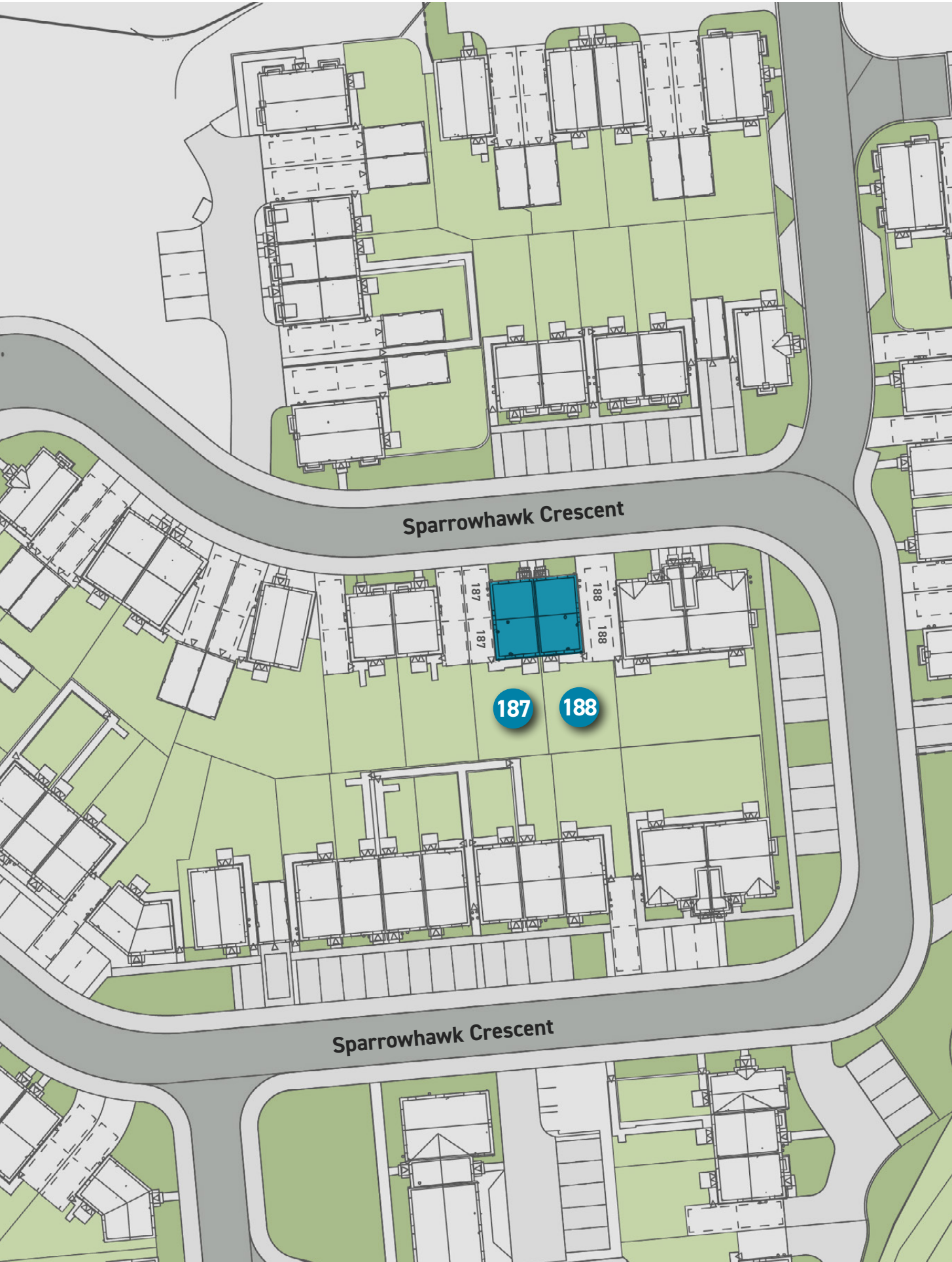
One of Hardingstone's best features is its convenient transport links. Access to main road links are close by with the M1 motorway being just two miles away at junction 15.

The station at Northampton offers direct train services to London Euston with journey times of around one hour. There are also excellent bus links serving the town and its outlying villages to destinations as far afield as Leicester, Bedford, Milton Keynes, and Peterborough. Both Luton Airport and the East Midlands Airport are easily accessible via the M1 motorway, and Birmingham Airport can be reached by train or by car via the M6 and M1 motorways.

- Barnes Meadow Nature Reserve 2.8 miles
- Northampton city centre 3 miles
- St James Retail Park 3.8 miles
- Northampton railway station 4 miles
- Riverside Retail Park 4.5 miles
- Weston Favell Shopping Centre 5.2 miles
- Sywell Country Park 8.4 miles
- Luton Airport 37 miles
- Birmingham Airport 46 miles
- London 65 miles



SITE PLAN



PLOT 187

80 Sparrowhawk Crescent, Northampton, Northamptonshire NN4 6GQ



2 bedroom semi-detached house

Driveway parking for 2 cars

Turfed rear garden

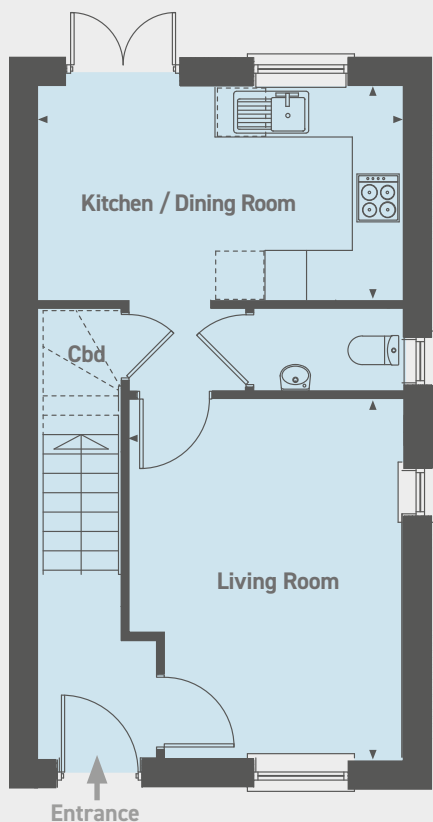
Downstairs WC

£94,000 for a 40% share

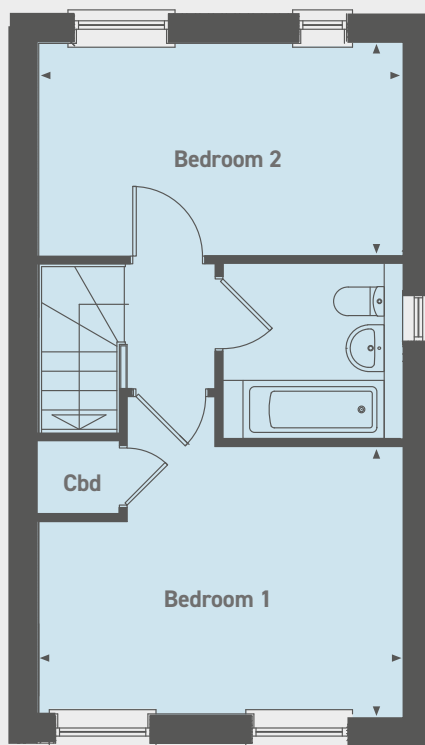
Open Market Value: **£235,000**

Monthly Rent: **£323.12**

Service Charge: **£26.33**



Ground floor



First floor

Ground floor

Kitchen / Dining Room

4.39m x 2.60m (14'4" x 8'5")

Living Room

4.35m x 3.32 (14'2" x 10'8")

First floor

Bedroom 1

4.39m x 3.25m (14'4" x 10'6")

Bedroom 2

4.39m x 2.60m (14'4" x 8'5")

PLOT 188

82 Sparrowhawk Crescent, Northampton, Northamptonshire NN4 6GQ



2 bedroom semi-detached house

Driveway parking for 2 cars

Turfed rear garden

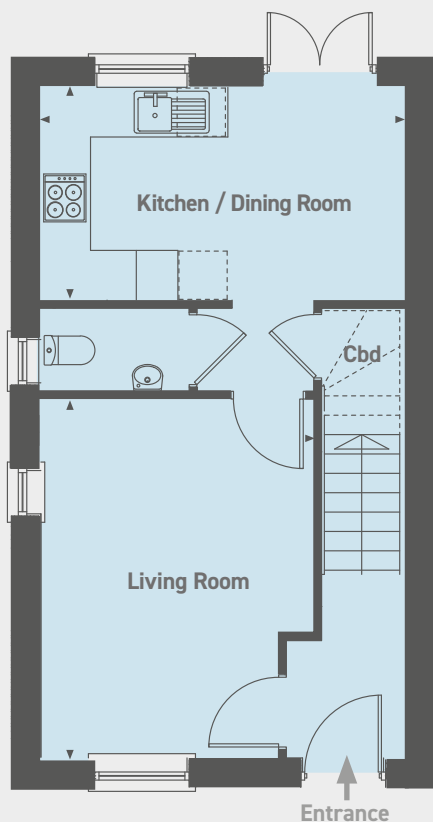
Downstairs WC

£94,000 for a 40% share

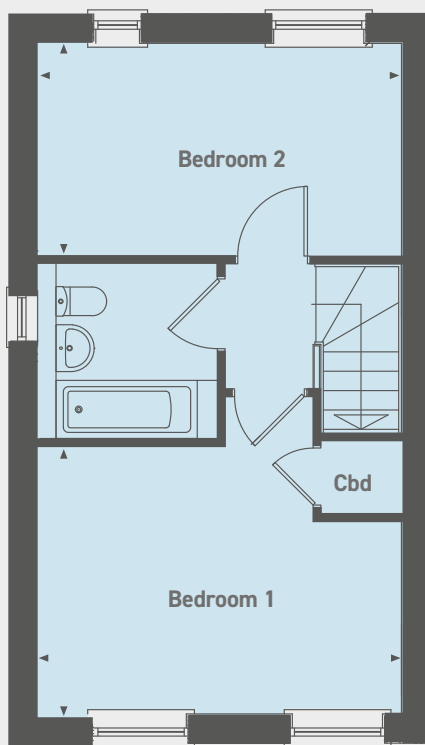
Open Market Value: **£235,000**

Monthly Rent: **£323.12**

Service Charge: **£26.33**



Ground floor



First floor

Ground floor

Kitchen / Dining Room
4.39m x 2.60m (14'4" x 8'5")

Living Room
4.35m x 3.32 (14'2" x 10'8")

First floor

Bedroom 1
4.39m x 3.25m (14'4" x 10'6")

Bedroom 2
4.39m x 2.60m (14'4" x 8'5")

LANDIMORE PARK

Hardingstone, Northamptonshire NN4 6EF

Please note the most up-to-date availability can be found on our website www.stonewaterhomes.co.uk. Alternatively call the New Homes team to find out more on 02380 658 836

Further details are available upon request.

FIND OUT ABOUT SHARED OWNERSHIP

Please note that all sales particulars and images are for marketing and illustrative purposes only. Plans, computer generated images and photos may contain elements which are not present upon the final completion of the property.

